

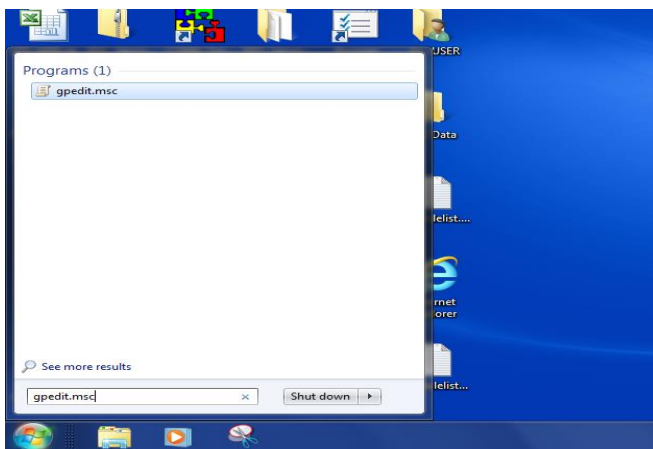
Browsers:

Recommended : **Google Chrome**

Alternative: Internet Explorer V.9 and greater

Setting the Internet Explorer Compatibility:

Start - Search Programs and files - type → **gpedit.msc**



Select: Computer Configuration – Administrative Templates – Windows Components – Internet Explorer – Compatibility View – Turn on Internet Explorer Standards Mode for Local Intranet → set to Enabled – Apply – OK

